



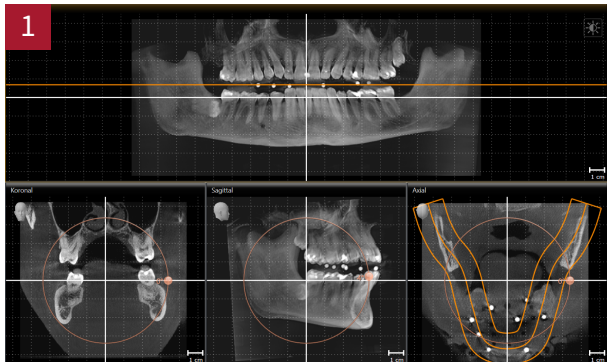
## ***PROGRAMMING THE VIRTUAL ARTICULATOR IN CEREC***

Using SICAT Function and a 3D X-ray scan with not visible temporomandibular joints | QUICK GUIDE | English

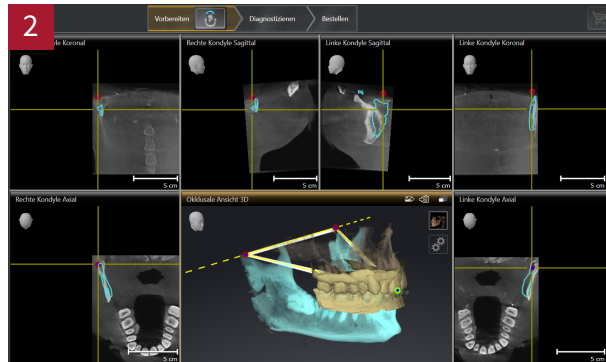
# PROGRAMMING THE VIRTUAL ARTICULATOR IN CEREC

Using SICAT Function and a 3D X-ray scan with not visible temporomandibular joints | QUICK GUIDE

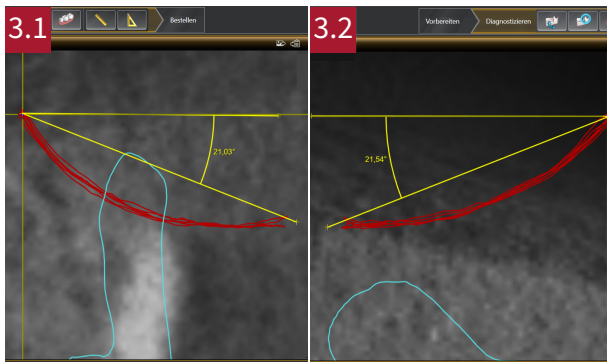
You can measure the parameters required for programming the virtual CEREC articulator in SICAT Function. For this purpose, you must have recorded the following movements for the patient using SICAT JMT\*: Guided opening movement, protrusion movement, laterotrusion to the left and laterotrusion to the right. You can enter the values in the "Programming the Virtual Articulator in CEREC" form, which you can download from the SICAT homepage.



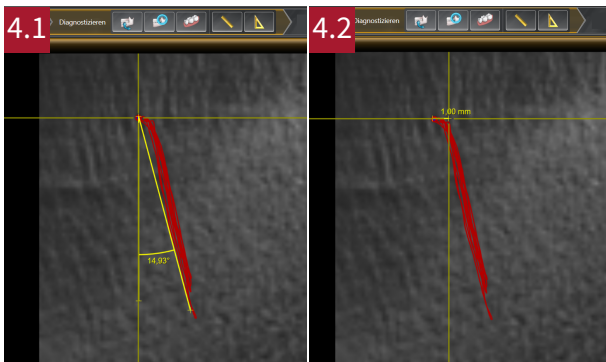
- In the **Volume Alignment dialog**, horizontally align the occlusal plane such that the radiopaque fiducial markers are in a horizontal line in the Panorama view. Use the reference grid for orientation. Then, click **OK**.
- Next, switch to the **TMJ workspace**.
- Under **Active Jaw Relation**, select a jaw movement.
- Under **Objects**, click **Jaw Motion Tracking Data**. The **Properties** area of the Bonwill triangle appears.



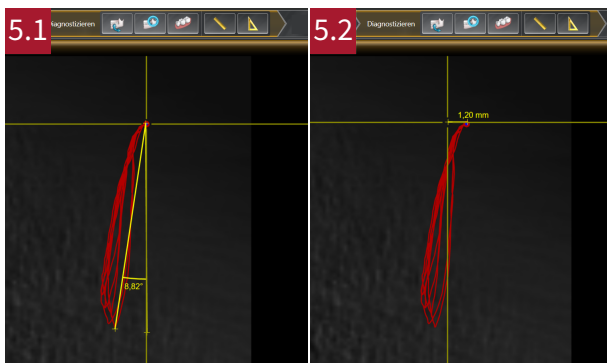
- Under **Active Jaw Relation**, select the **Guided Opening Movement** in the drop-down menu. Ensure that the rows of teeth are closed.
- In the occlusal 3D view, set the incisal point between the lower central incisors by double clicking on the CAD/CAM data.
- Under **Properties > Bonwill triangle**, click **Calculate Axis**.
- Set a suitable base value. Correct the calculated arm values so that they are symmetrical and write down the values of the base and the arm and the Balkwill angle.



- Under **Active Jaw Relation**, select **Protrusion Movement** from the drop-down menu, enlarge the sagittal view and adjust the crosshair.
- Use the **Angle Measurement Tool** in the **sagittal view right** to measure the Sagittal Angle Right (see Figure 3.1).
- Use the **Angle Measurement Tool** in the **sagittal view left** to measure the Sagittal Angle Left (see Figure 3.2)
- Write down the respective values.



- Under **Active Jaw Relation**, select **Laterotrusion to the Left** from the drop-down menu, enlarge the **axial view right** and adjust the crosshair.
- Use the **Angle Measurement Tool** to measure the **Bennett Angle Right** (see Figure 4.1).
- Use the **Distance Measurement Tool** to measure the **Immediate side shift right** (see Figure 4.2).
- Write down the respective values.



- Under **Active Jaw Relation**, select **Laterotrusion to the Right** from the drop-down menu, enlarge the **axial view left** and adjust the crosshair.
- Use the **Angle Measurement Tool** to measure the **Bennett Angle Left** (see Figure 5.1).
- Use the **Distance Measurement Tool** to measure the **Immediate side shift left** (see Figure 5.2).
- Write down the respective values.



- In the CEREC software configuration, select the **Articulation** dialog under **Parameters**.
- Manually enter the values measured in SICAT Function into the CEREC articulator.

SICAT

**MANUFACTURER**  
**SICAT GMBH & CO. KG**  
 FRIESDORFER STR. 131-135  
 53175 BONN, GERMANY  
 WWW.SICAT.COM

CE 0197

**SUPPORT**  
 TELEPHONE: +49 228 286206600  
 FAX: +49 228 286206971  
 E-MAIL: SUPPORT@SICAT.COM



DA70QU005  
 REVISION: 2021-02-25  
 PAGE: 2 / 2